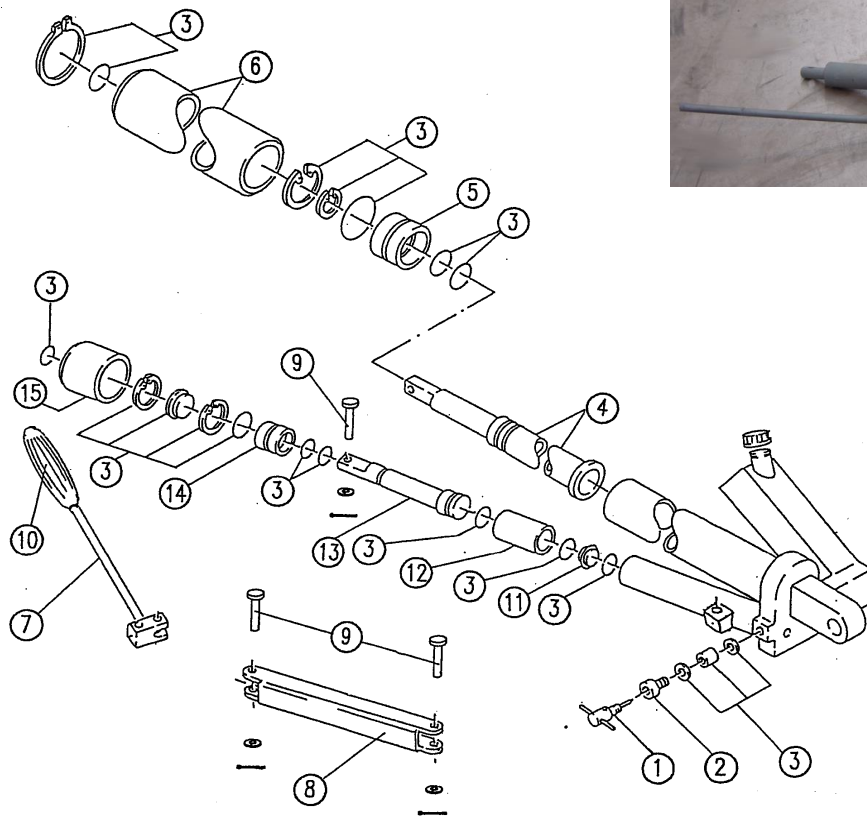


SECTION 6:

CHUTES & CHUTE PUMP






ITEM	PART NO	DESCRIPTION	
REF	502038	CHUTE PUMP COMPLETE MAXI	
	502055	CHUTE PUMP COMPLETE MINI	Cesco
1	501502	RELEASE VALVE	
2	501503	GLAND BUSH	
3	501511	REPAIR KIT	
4	501538	RAM PISTON MAXI	
	501554	RAM PISTON MINI	Cesco
5	501537	RAM SHAFT SLEEVE	
6	501539	RAM OUTER COVER MAXI	
	501555	RAM OUTER COVER MINI	Cesco
7	501580	PUMP HANDLE	
8	501581	TRANSFER LEVER	
9	501582	CLEVIS PIN SET	
10	501583	RUBBER HAND GRIP	
11	501541	PISTON TUBE ADAPTOR	
12	501546	PISTON TUBE	
13	501542	PISTON	
14	501547	PUMP SLEEVE	
15	501543	PUMP OUTER COVER	

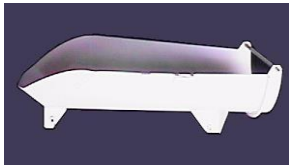

ALL ITEMS COMMON TO CESCO & FORBES, UNLESS NOTED.

	PART NO.	DESCRIPTION
	034-502733	Chute Cylinder – Double Acting
	034-501368	Seal Kit – 32mm Diameter Shaft
	034-504750	Control Valve – Double Acting Ram
 	065-38OP10H	Handle for Control Valve
	065-380P10LB	Lever Box for Control Valve

	PART NO.	DESCRIPTION
	034-506195A	Extension Chute Liner (complete with aluminium strip) and rivets Cesco
	034-508465	Extension Chute Poly (frame only)
	032-508466	Extension Chute Poly Complete (Available Primed or Painted.) Cesco
	034-508462	Placement Chute Poly Frame only (Painted)
	032-508463	Placement Chute Poly Complete (Painted) (Available Primed or Painted.) Cesco
	034-502732	<i>Extension Light Weight Liner - 6mm</i>
	034-508308	<i>Extension Light Weight Frame (Primed or Painted)</i>
	034-508428	<i>Extension Light Weight Complete (Primed or Painted)</i>

	PART NO.	DESCRIPTION
	034-502731	Placement Light Weight Liner
	034-508309	Placement Light Weight Frame (Primed or Painted)
	034-508429	Placement Light Weight Complete ASSY, CHUTE Placement-LWT
	034-502736	Half Placement Light Weight Liner
	034-508454	Half Placement Light Weight Frame (Primed or Painted)
	034-508427	ASSY, Half Placement Light Weight Complete
	034-508466FL	Extension Liner – Forbes
	032-708404	Extension Chute Frame Only – Forbes
	032-708418	Extension Chute Complete – Forbe

	<p>034-508463FL 033-708407 033-708417</p>	<p>Placement Liner Placement Chute Frame Only Placement Chute Complete</p>
	<p>030-508439 030-508414 030-708412 030-708409 030-708413</p>	<p>Feed Chute (curved) Cesco Feed Chute (square) Cesco Load Hopper (curved) Forbes Load Hopper (square) 7.4M³ Forbes Load Hopper (square) 6M³ Forbes Available Primed or Painted</p>
	<p>030-508439 030-508414 030-708412 030-708409 030-708413</p>	<p>Feed Chute (curved) Cesco Feed Chute (square) Cesco Load Hopper (curved) Forbes Load Hopper (square) 7.4M³ Forbes Load Hopper (square) 6M³ Forbes Available Primed or Painted</p>

	PART NO.	DESCRIPTION
	031-508437	Swivel Chute – Short
	031-508401	Swivel Chute – Long Available Primed or Painted
	031-708411 031-708419	Swivel Chute – Short Swivel Chute – Long Forbes Available Primed or Painted
	034-506119	Swivel Chute Pin Cesco & Forbes
	034-506199	Flexi-strap (finger) Hook

	PART NO.	DESCRIPTION
	<p>034-502707</p> <p>034-502708</p>	<p>Flexi-strap Short (24")</p> <p>Flexi-strap Long (31")</p>
	<p>080-508445</p> <p>034-506178</p>	<p>Swivel Chute Flap Kit</p> <p>Flap Rubber ONLY</p>
	<p>080-508400</p>	<p>Scraper</p>